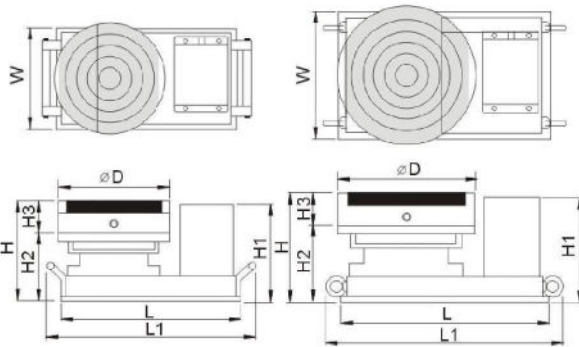
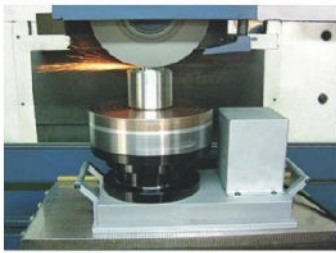


54320

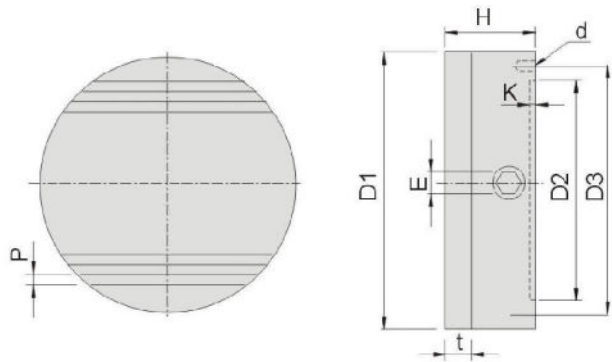
RD



		L	L1	W	H	H1	H2	H3	D	Volts IPH	Motor Ratio	R.P.M /min	Mass Kg/cm		
54320-02	RD130-110	228	265	130	170	148	103	52	130	110V	60W 1:10	50-300	2.8	10kg	12kg
54320-04	RD130-220	228	265	130	170	148	103	52	130	220V	60W 1:10	50-300	3.0	12kg	12kg
54320-06	RD160-110	280	325	138	153	146	103	50	160	110V	75W 1:15	25-200	30	15kg	28kg
54320-08	RD160-220	280	325	138	153	146	103	50	160	220V	75W 1:15	25-200	30	15kg	28kg
54320-10	RD200-110	325	370	176	180	177	122	58	200	110V	120W 1:20	15-150	58	22kg	46kg
54320-12	RD200-220	325	370	176	180	177	122	58	200	220V	120W 1:20	15-150	58	22kg	46kg
54320-14	RD250-220	376	442	218	190	183	132	58	250	220V	200W 1:20	12-125	116	30kg	64kg
54320-16	RD300-220	424	490	244	207	186	144	63	300	220V	200W 1:20	12-125	116	40kg	88kg
54320-18	RD400-220	540	606	342	228	220	165	63	400	220V	400W 1:20	12-125	160	60kg	155kg

54330

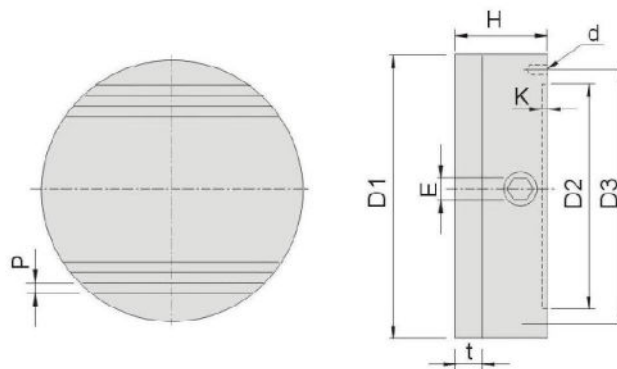
FCD



		D1	t		D2	D3	K	d	E	H	
54330-100	FCD100	100	10	4 (1+3)	60	85	4	4-M6	8	52	3.15kg
54330-130	FCD130	130			90	115	4	4-M8			4.9kg
54330-150	FCD150	150			110	132	4				6.7kg
54330-160	FCD160	160			120	140	4				7.7kg
54330-200	FCD200	200			160	180	5	4-M10			12.5kg
54330-250	FCD250	250			200	225	5				19.5kg
54330-300	FCD300	300			230	280	5				28.5kg
54330-350	FCD350	350			230	311	5				39kg
54330-405	FCD405	405			230	380	5				52kg

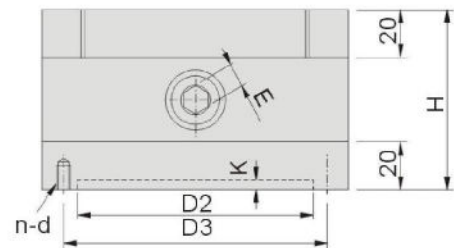
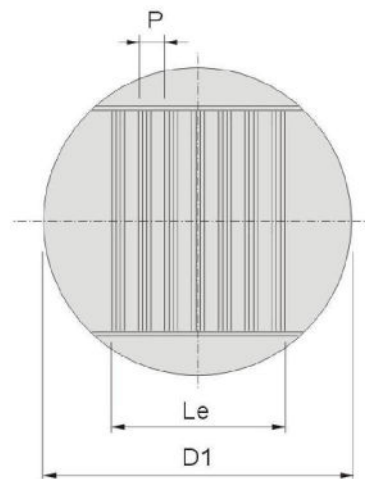
54340

MCD



		D1	t		D2	D3	K	d	E	H	
54340-100	MCD100	100	10	0.5+1.5	60	85	4	4-M6	8	52	3.1kg
54340-130	MCD130	130			90	115	4	4-M8			4.7kg
54340-150	MCD150	150			110	132	4				6.7kg
54340-160	MCD160	160			120	140	4				7.6kg
54340-200	MCD200	200			160	180	5	4-M10			11.6kg
54340-250	MCD250	250			200	225	5				17.8kg
54340-300	MCD300	300			230	280	5				29.0kg
54340-350	MCD350	350			230	311	5				39.0kg
54340-405	MCD405	405			230	380	5	52.0kg			

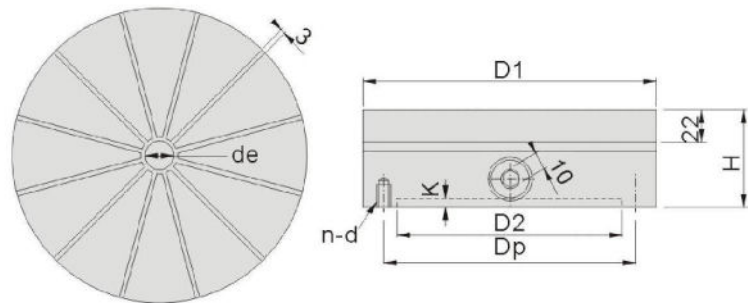
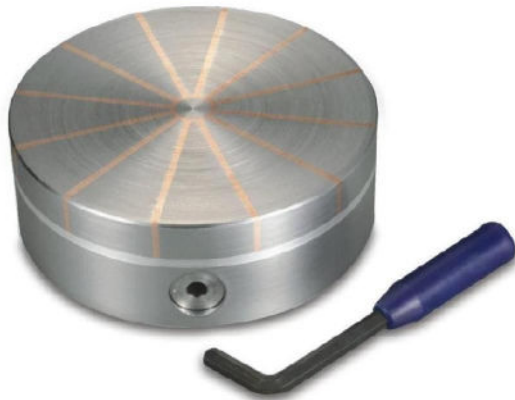
54350 HMTR



		D1	Le		D2	D3	K	n-d	E	H	
54350-13	HMTR-13	130	78	11.2 (1.6+2+ 1.6+6)	100	112	4	4xM6	10	75	6.5kg
54350-16	HMTR-16	160	100		125	140	4	4xM8			9.8kg
54350-20	HMTR-20	200	128		160	180	4	4xM8			15kg

54360

HRCS



			D1	de		D2	K	n	d	Dp	H		
54360-02	HRCS-10	104X63	104	16	8	60	4	M6	4	80	63	4.2kg	
54360-04	HRCS-13	130X63	130			80				112		6.6kg	
54360-06	HRCS-16	162X63	162			125				140		10.2kg	
54360-08	HRCS-20	202X68	202	12	160	178		17.1kg					
54360-10	HRCS-25	250X68	250		200	224		26.2kg					
54360-12	HRCS-32	320X68	320	19	16	250		M10		4		280	68
54360-14	HRCS-36	360X68	360			280					320	55.0kg	
54360-16	HRCS-40	400X68	400			315					355	67.0kg	